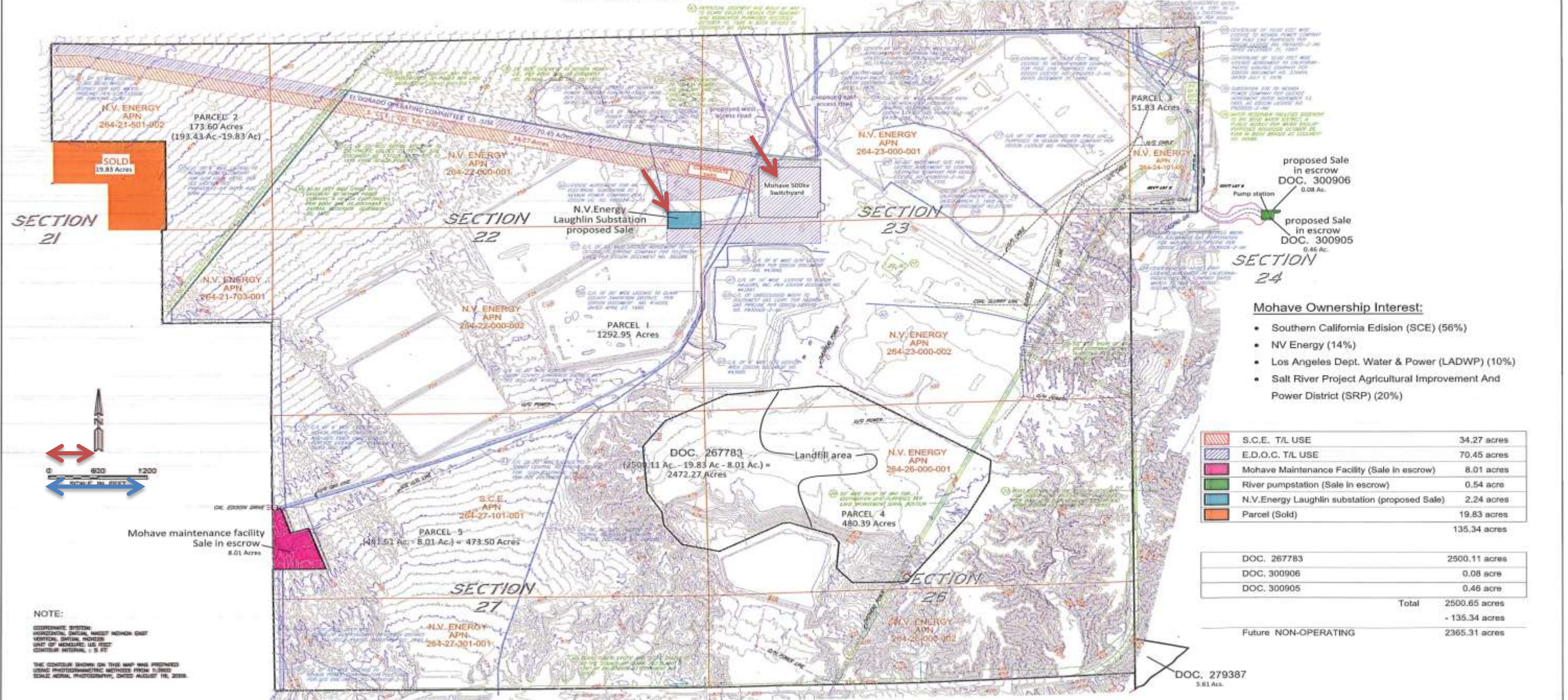


MOHAVE GENERATING STATION SITE
 PORTIONS OF SECTION 21, 24, 26 27 AND ALL IN SECTIONS 22 AND 23, T. 32 S., R. 66 E., M.D.M.
 CLARK COUNTY, STATE OF NEVADA



proposed Sale in escrow
 DOC. 300906
 0.08 Ac.

proposed Sale in escrow
 DOC. 300905
 0.46 Ac.

- Mohave Ownership Interest:**
- Southern California Edison (SCE) (56%)
 - NV Energy (14%)
 - Los Angeles Dept. Water & Power (LADWP) (10%)
 - Salt River Project Agricultural Improvement And Power District (SRP) (20%)

	S.C.E. T/L USE	34.27 acres
	E.D.O.C. T/L USE	70.45 acres
	Mohave Maintenance Facility (Sale in escrow)	8.01 acres
	River pumpstation (Sale in escrow)	0.54 acre
	N.V. Energy Laughlin substation (proposed Sale)	2.24 acres
	Parcel (Sold)	19.83 acres
	Total	135.34 acres

DOC. 267783	2500.11 acres
DOC. 300906	0.08 acre
DOC. 300905	0.46 acre
Total	2500.65 acres
Future NON-OPERATING	135.34 acres
	2365.31 acres

NOTE:
 COORDINATE SYSTEM:
 HORIZONTAL CONTROL: NAD83 NORTH AMERICAN DATUM
 VERTICAL CONTROL: NAVD83
 UNIT OF MEASURE: US FEET
 CONTIGUOUS INTERVAL: 5 FT

THE CONTIGUOUS INTERVAL ON THIS MAP WAS PREPARED USING PHOTOGRAMMETRIC METHODS FROM FLIGHTS BEARING AERIAL PHOTOGRAPHY, DATED AUGUST 19, 2009.

LEGEND

- Existing easement
- Existing license
- Existing utility line

NOTE: All survey notes are based on ALTA survey dated 7/22/2009. Recommended that a new ALTA survey be prepared prior to final disposition of lands.

This land use map is for informational purposes only to be used by the owners of the Mohave G/S in determining the existing uses of the site and to help with decision making for the future use or disposition of the property or portions of the property.

MOHAVE GENERATING STATION
LAND USE MAP