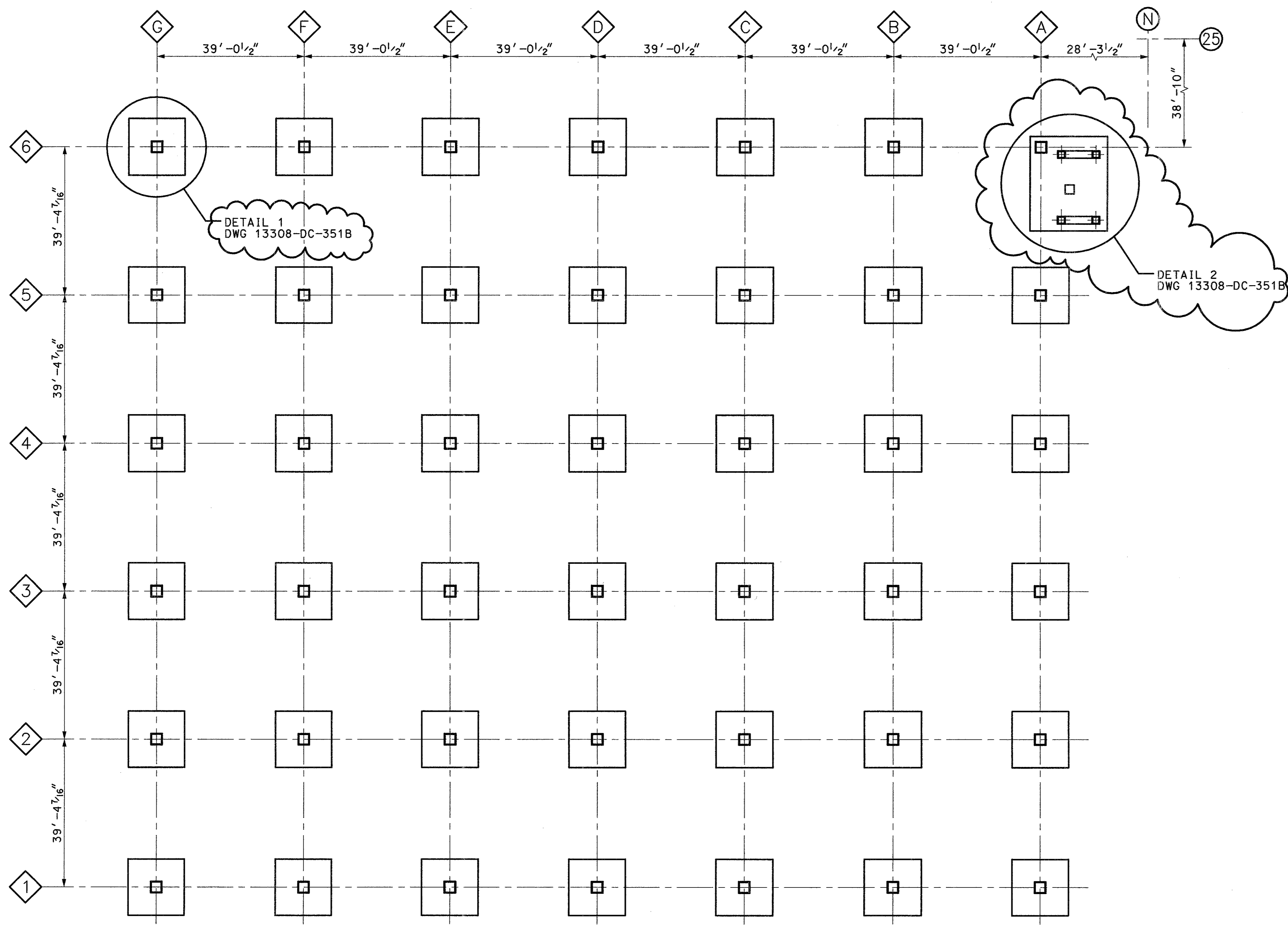




SOUTHERN CALIFORNIA PUBLIC POWER AUTHORITY

ATTACHMENT H

13308-DC-351A



NOTES:

1. GENERAL CONCRETE NOTES & STANDARD DETAILS SEE DRAWING 13308-DC-STD1.
2. INDICATES VENDOR COLUMN LINES.
3. INDICATES PROJECT GRID LINES.

REFERENCE DRAWINGS:

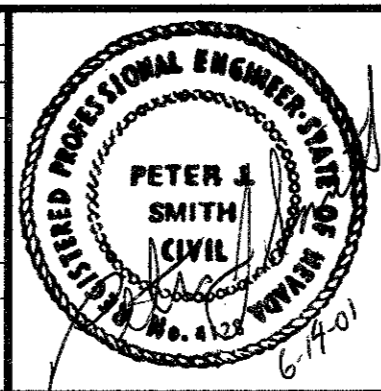
BDT ENGINEERING
FOUNDATION ANCHOR BOLT DETAILS
DWG BPO061-LD1

BDT ENGINEERING
FOUNDATION LOCATION PLAN & LOAD TABLES
DRAWING BPO061-LD2

SCANNED
MAY 14 2001

PLAN
SCALE: 1/16" = 1'-0"

REVISION	DESCRIPTION	CHECKED	REVISION	DESCRIPTION	CHECKED	REVISION	DESCRIPTION	CHECKED
		CORRECT	1	REMOVED HOLDS. ADDED DETAIL 2	CORRECT	0	ISSUED FOR CONSTRUCTION	CORRECT
		APPR DATE			APPR DATE			APPR DATE



**APEX GENERATING STATION
UNIT NO. 1
AIR COOLED CONDENSER FOUNDATION
DETAILS SHEET 1**

**MIRANT CORPORATION
CLARK COUNTY, NEVADA**

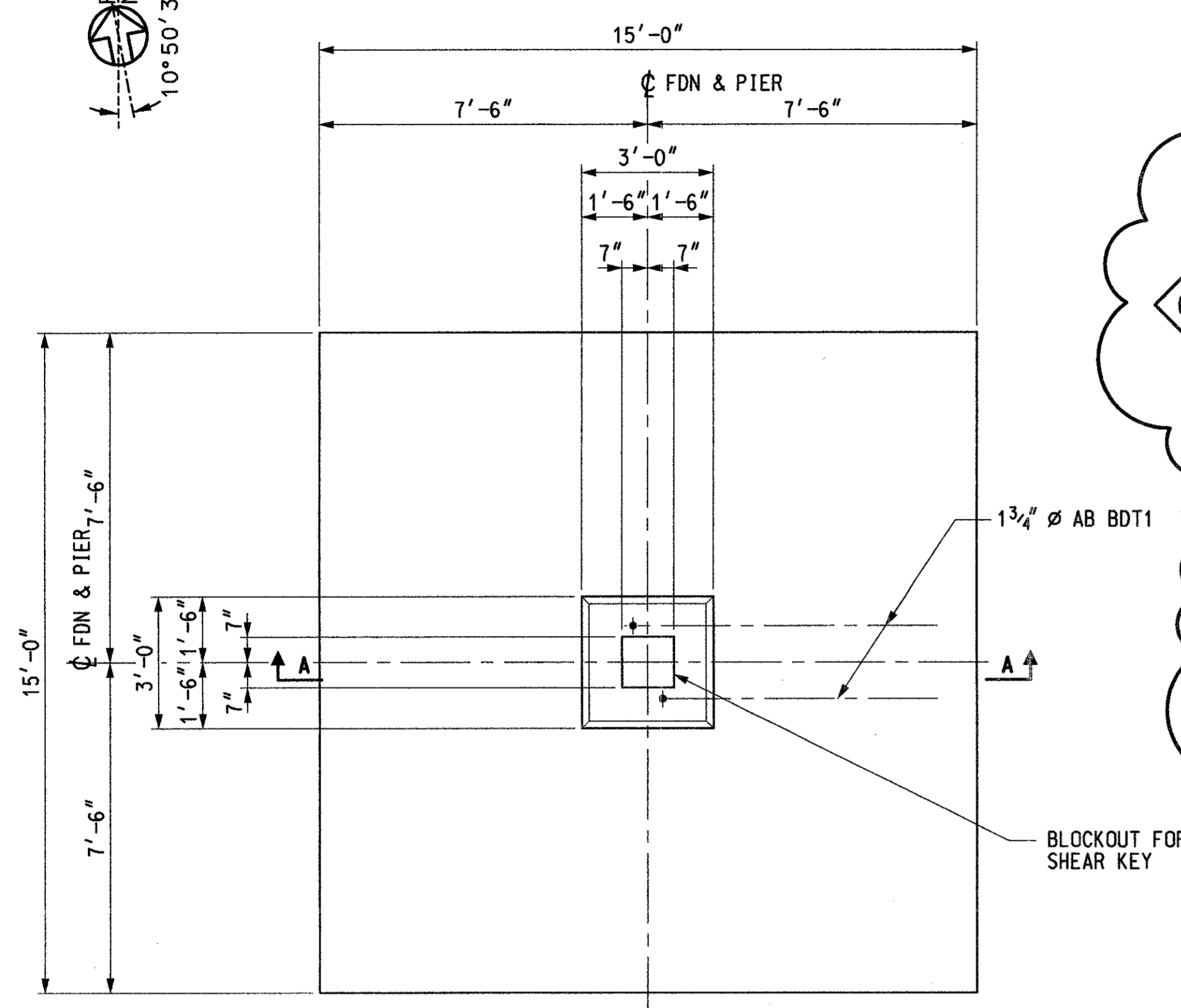
STONE & WEBSTER A SHAW GROUP COMPANY

DRAWING NO. **13308-DC-351A-1**

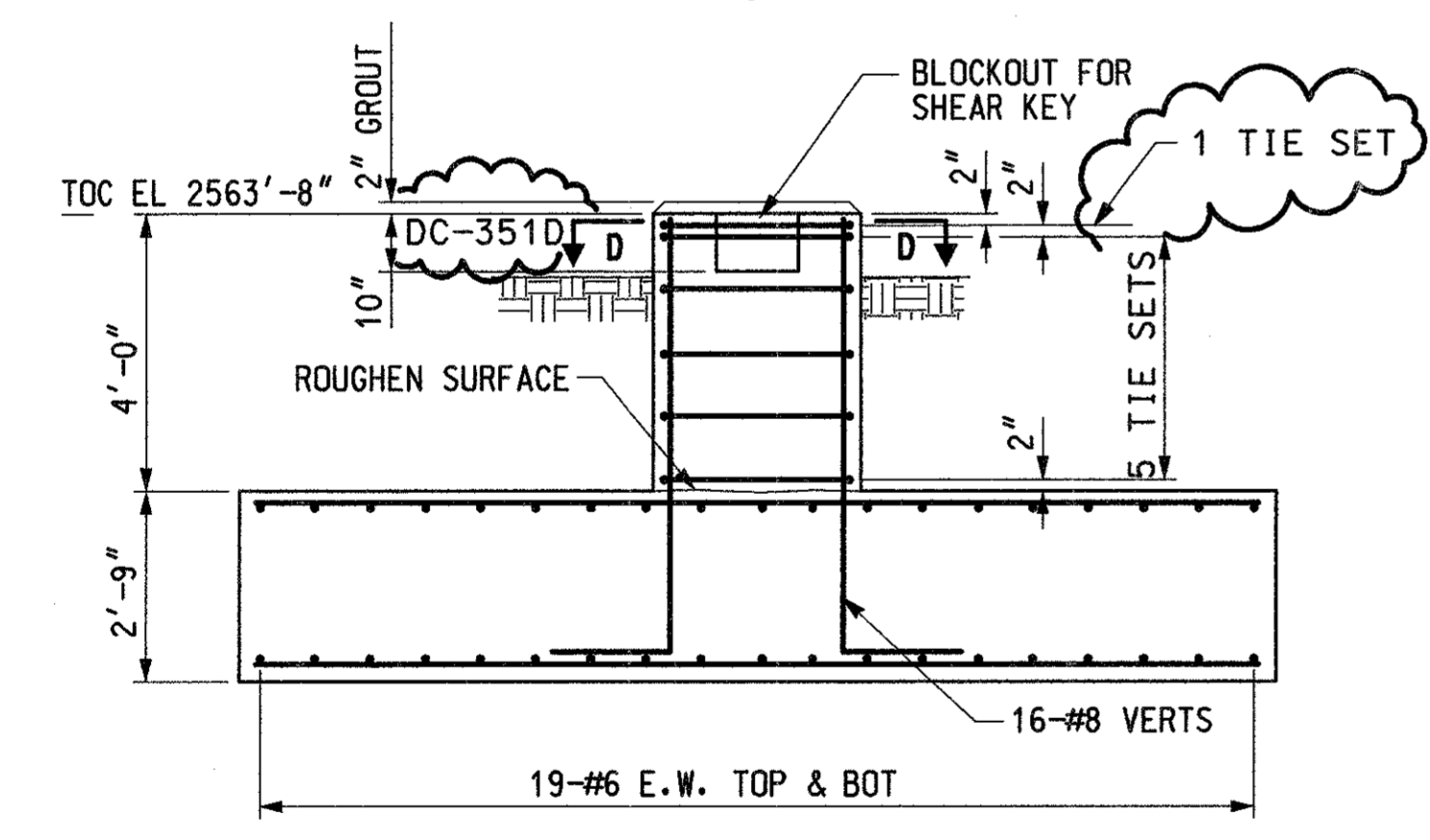
DESIGNED BY J. SAUTINS	DRAWN BY M. GUECIA	CAD MODEL	LEVELS	WORK PKG	PCT
DSGN CHK'D BY D. ASMUS	CHK'D BY J. SAUTINS	APDC351A			

SUPERVISOR: J. SAUTINS

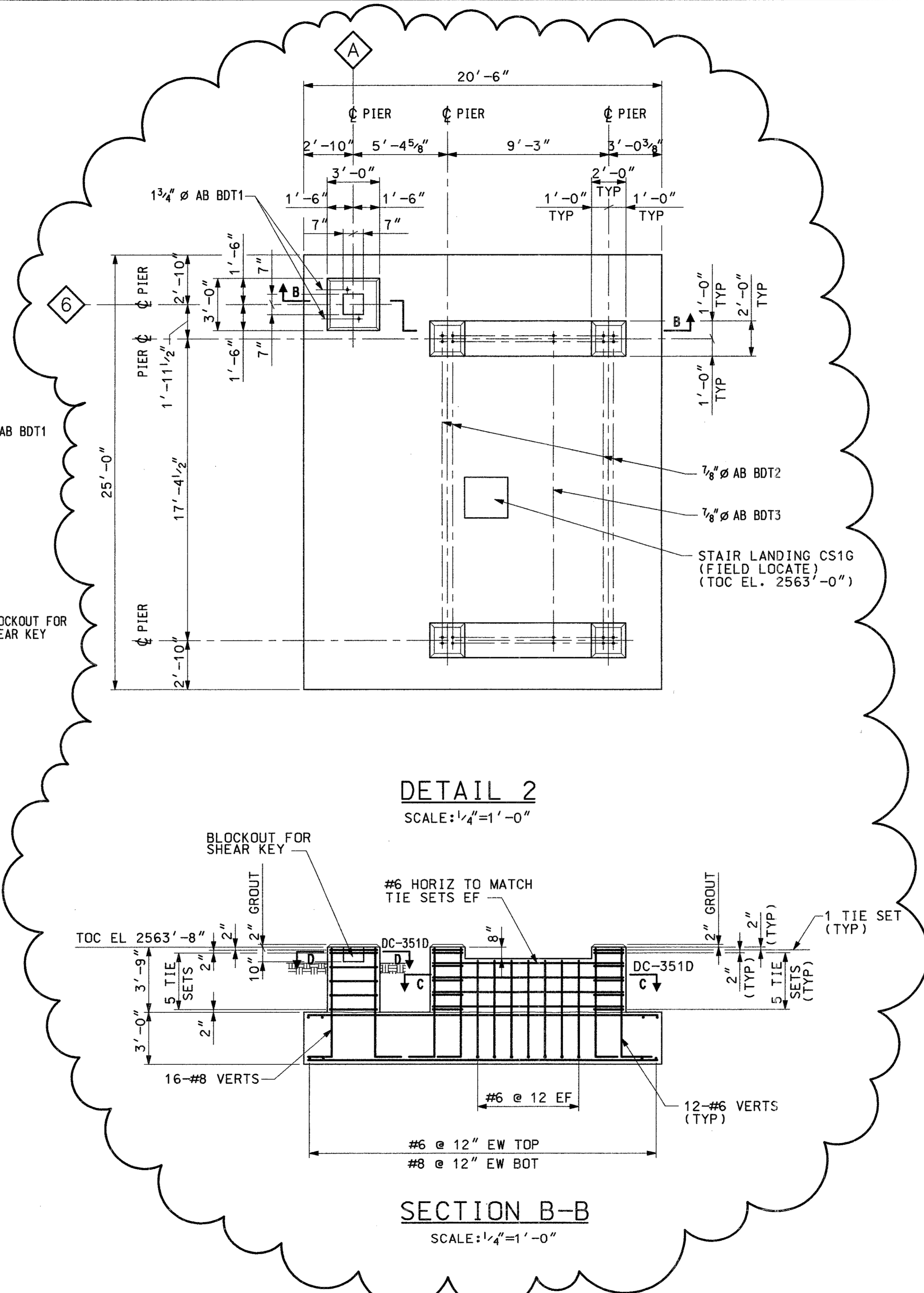
13308-DC-351B



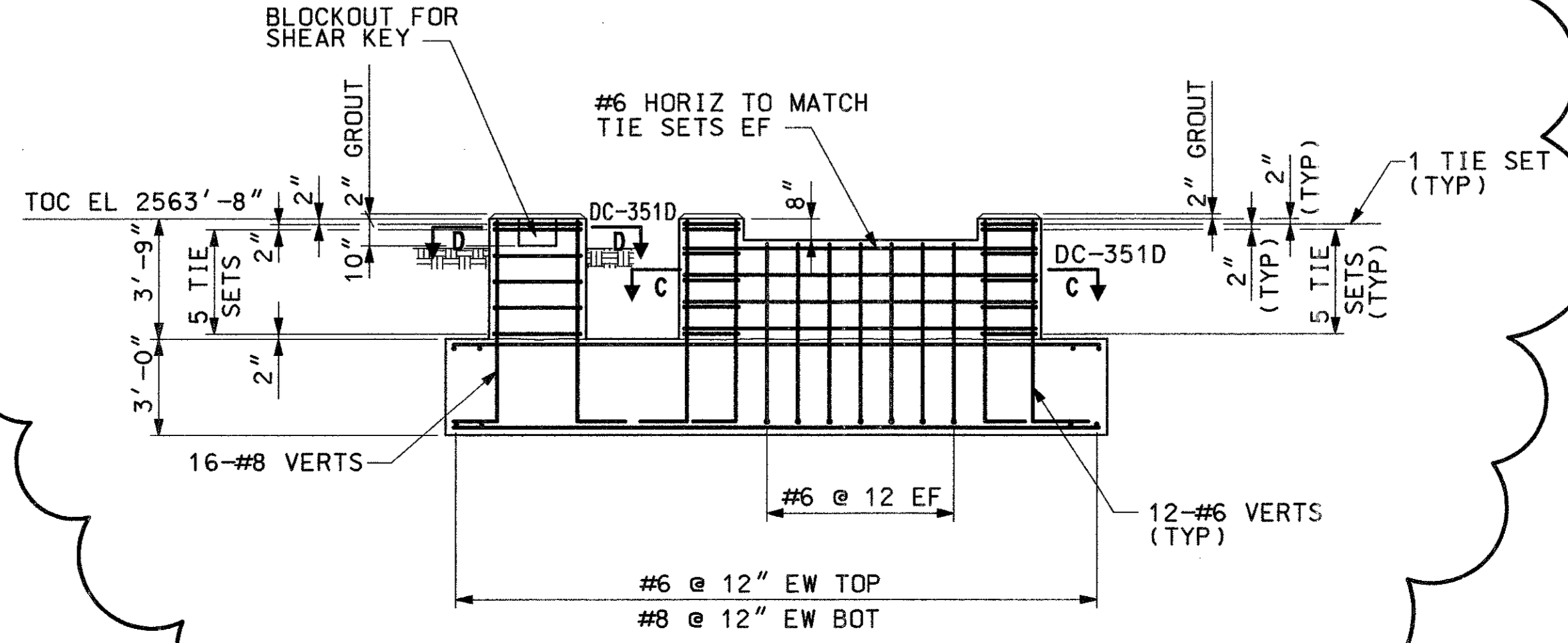
DETAIL 1
SCALE: 3/8"=1'-0"



SECTION A-A
SCALE: 3/8"=1'-0"



DETAIL 2
SCALE: 1/4"=1'-0"



SECTION B-B
SCALE: 1/4"=1'-0"

NOTES:

- 1. FOR NOTES SEE DRAWING 13308-DC-351A.

SCANNED
MAY 14 2001

APEX GENERATING STATION
UNIT NO. 1
AIR COOLED CONDENSER FOUNDATION
DETAILS SHEET 2

MIRANT CORPORATION
CLARK COUNTY, NEVADA

STONE & WEBSTER A SHAW GROUP COMPANY

DRAWING NO. 13308-DC-351B-1

DESIGNED BY J. SAUTINS
DRAWN BY M. GUECIA
CAD MODEL LEVELS WORK PRG PCT
DSGN CHK'D BY D. ASMUS
CHK'D BY J. SAUTINS
APDC351B

REVISION	DESCRIPTION	CHECKED	REVISION	DESCRIPTION	CHECKED	REVISION	DESCRIPTION	CHECKED
1	ADDED DETAIL 2 AND SECTION B. REMOVED SECTION D AND ANCHOR BOLT DETAIL	J.S.	0	ISSUED FOR CONSTRUCTION	J.S.			

