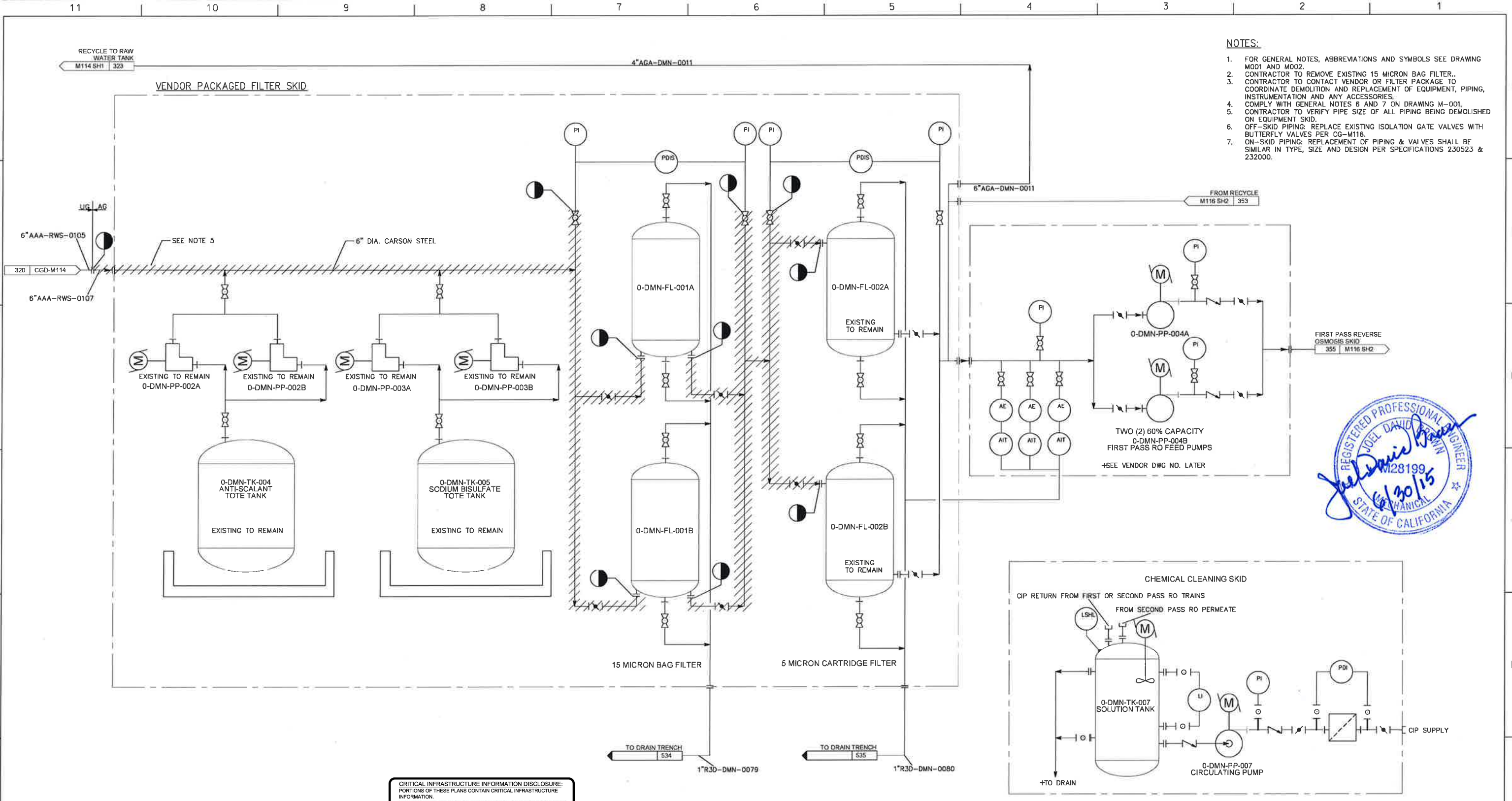


NOTES:

- FOR GENERAL NOTES, ABBREVIATIONS AND SYMBOLS SEE DRAWING M001 AND M002.
- CONTRACTOR TO REMOVE EXISTING 15 MICRON BAG FILTER..
- CONTRACTOR TO CONTACT VENDOR OR FILTER PACKAGE TO COORDINATE DEMOLITION AND REPLACEMENT OF EQUIPMENT, PIPING, INSTRUMENTATION AND ANY ACCESSORIES.
- COMPLY WITH GENERAL NOTES 6 AND 7 ON DRAWING M-001.
- CONTRACTOR TO VERIFY PIPE SIZE OF ALL PIPING BEING DEMOLISHED ON EQUIPMENT SKID.
- OFF-SKID PIPING: REPLACE EXISTING ISOLATION GATE VALVES WITH BUTTERFLY VALVES PER CG-M116.
- ON-SKID PIPING: REPLACEMENT OF PIPING & VALVES SHALL BE SIMILAR IN TYPE, SIZE AND DESIGN PER SPECIFICATIONS 230523 & 232000.



CRITICAL INFRASTRUCTURE INFORMATION DISCLOSURE:
 PORTIONS OF THESE PLANS CONTAIN CRITICAL INFRASTRUCTURE
 INFORMATION.
 UNAUTHORIZED RELEASE OR REPRODUCTION OF THESE DOCUMENTS
 MAY RESULT IN CIVIL PENALTY OR OTHER ACTIONS.

SCPPA SOUTHERN CALIFORNIA PUBLIC POWER AUTHORITY		PARSONS BRINCKERHOFF 333 7TH AVENUE - NEW YORK - NY 10001-212.613.8800	
Drawing Control			
Purpose	Approved By	Date	Released By
For Information			
For Comment			
For Bid			
For Fabrication			
For Construction			
Approved for Construction	Work Order		
-R.NILAN 3-24-10	3010		
Chief Mechanical Engineer			
Engineering Review			
Disc	Engr	Date	
Mech	+JW	+3-24-10	
Elec			
Civil			
Arch			
Instr	+AJ	+3-24-10	
		+2	
Drawn	Designed	Checked	
+JFH	+DR	-KV	
Lead Engineer	Date		
+J WILEY	+3-24-10		
Scale			
+NONE			

NO.	DATE	REVISION	DWN.	CHK.	APPROVED	REFERENCE	NO.	DATE	REVISION	DWN.	CHK.	APPROVED
1		REVISED PIPE SPECIFICATION; CONNECTED DRAIN LINES TO DRAIN TRENCH HEADER										
2		ADDED NOTE 2										
3		UPDATED SKIDS TO REFLECT VENDOR DETAILS; ADDED LINE NUMBERS TO DRAIN TRENCH										
4		TRENCH LINES										

CITY OF ANAHEIM PUBLIC UTILITIES DEPARTMENT ELECTRICAL ENGINEERING DIVISION				
CANYON POWER PLANT				
DEMOLITION P&ID WATER CONDITIONING SYSTEM				
DATE	DSGNR.	ENG.	FIELD Supt	ENG. MGR.
BY: JFH	PROJ. NO.	DRAWING NO.		REV.
CHECK	FIELD W.O.	CGD-M116 SH. 1		4
SCALE: NONE				