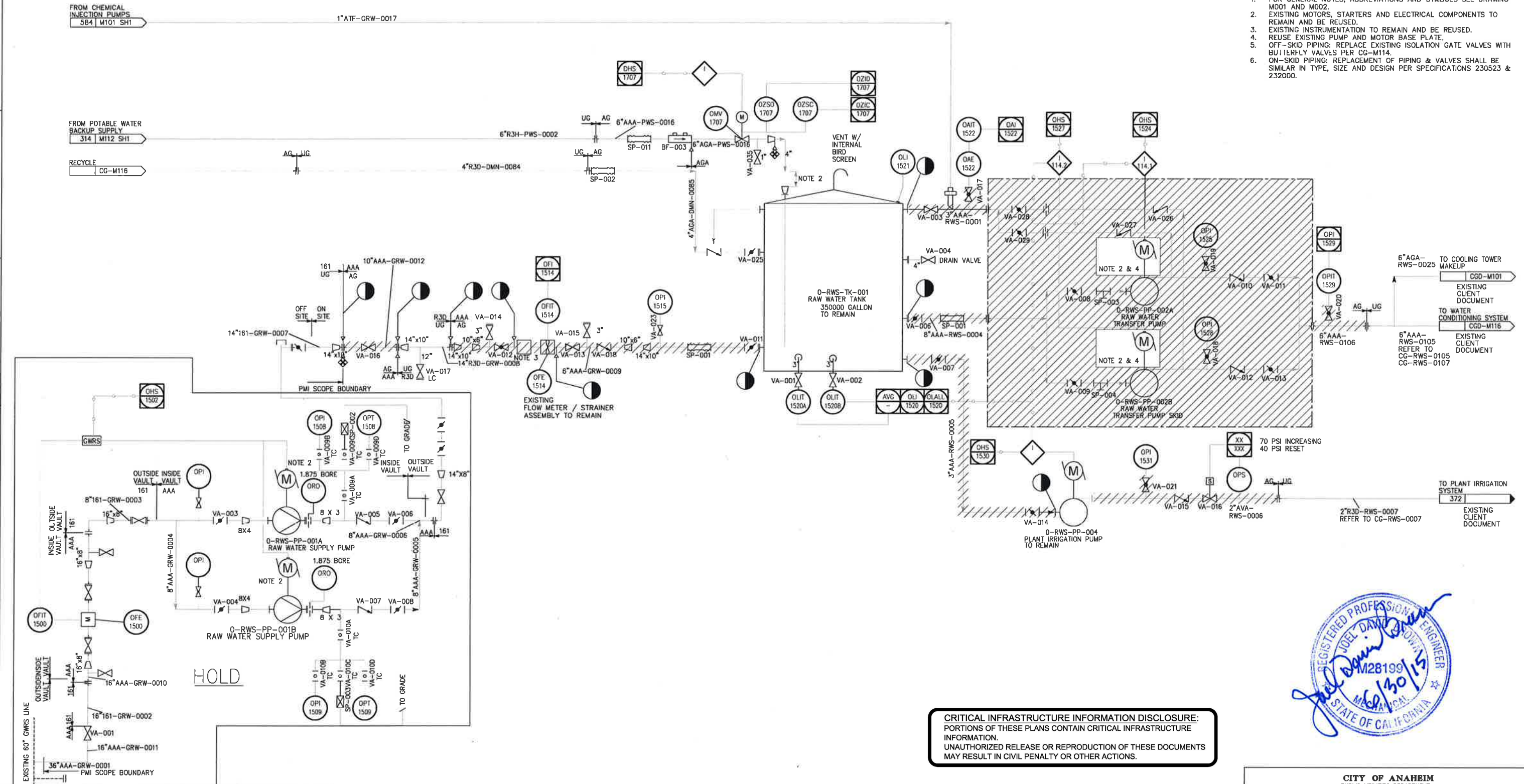


**NOTES:**

- FOR GENERAL NOTES, ABBREVIATIONS AND SYMBOLS SEE DRAWING M001 AND M002.
- EXISTING MOTORS, STARTERS AND ELECTRICAL COMPONENTS TO REMAIN AND BE REUSED.
- EXISTING INSTRUMENTATION TO REMAIN AND BE REUSED.
- REUSE EXISTING PUMP AND MOTOR BASE PLATE.
- OFF-SKID PIPING: REPLACE EXISTING ISOLATION GATE VALVES WITH BUTTERFLY VALVES PLR CG-M114.
- ON-SKID PIPING: REPLACEMENT OF PIPING & VALVES SHALL BE SIMILAR IN TYPE, SIZE AND DESIGN PER SPECIFICATIONS 230523 & 232000.



**CRITICAL INFRASTRUCTURE INFORMATION DISCLOSURE:**  
 PORTIONS OF THESE PLANS CONTAIN CRITICAL INFRASTRUCTURE INFORMATION.  
 UNAUTHORIZED RELEASE OR REPRODUCTION OF THESE DOCUMENTS MAY RESULT IN CIVIL PENALTY OR OTHER ACTIONS.



**SCPPA** Southern California Public Power Authority  
**Barton Malow**  
**BURNS AND ROE ENTERPRISES, INC.** Engineers and Constructors - Oradell, NJ

Drawing Control				Engineering Review			
Purpose	Approved By	Date	Released By	Date	Disc	Engr	Date
For Information							
For Comment							
For Bid							
For Fabrication							
For Construction							

Approved for Construction: **3010**  
 Chief Mechanical Engineer

Drawn	Designed	Checked	Date	Scale	NO.	DATE	REVISION
HJFH	HDR	HKV	18-24-10	1:1	1	4/2/20	RECORD DRAWING REFLECTING CONTRACTOR REPORTED FIELD CHANGES FOR PREVIOUS REVISIONS. SEE RELATED RECORD COPIES.
HJ WILEY			18-24-10	1:1	2	4/2/20	

**CITY OF ANAHEIM**  
 PUBLIC UTILITIES DEPARTMENT  
 ELECTRICAL ENGINEERING DIVISION

**CANYON POWER PLANT**

**DEMOLITION P&ID  
 RAW WATER SYSTEM**

DATE	DSG NR.	ENG.	FIELD Supt.	ENG. MGR.
BY HJFH	PROJ. NO.		DRAWING NO.	REV.
CHECK	FIELD W.O.		CGD-M114 SH.1	1